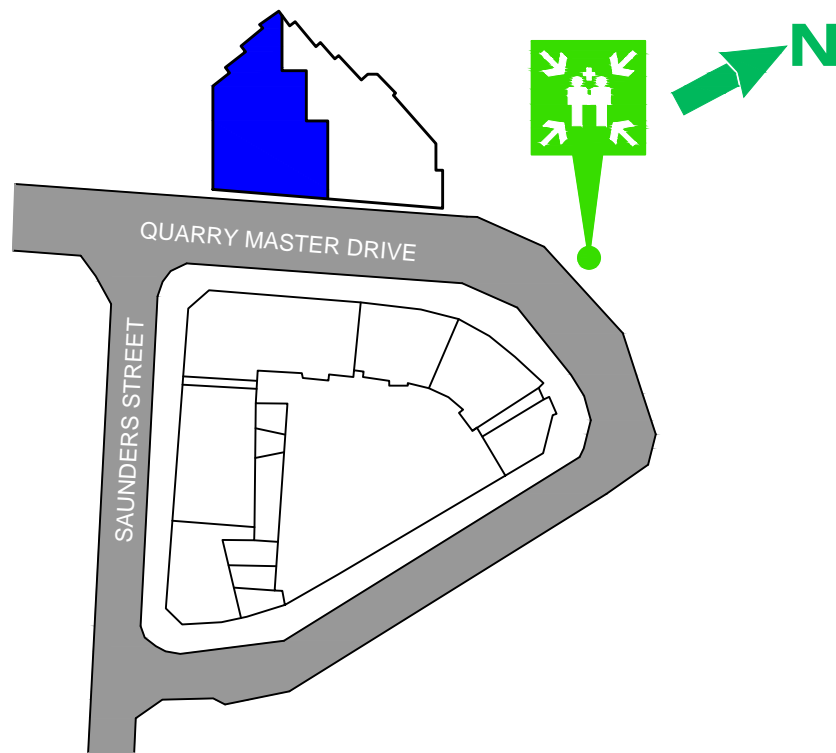


EVACUATION PROCEDURE

- R REMOVE** → REMOVE PEOPLE, OCCUPANT AND STAFF AWAY FROM THE DANGER. DO NOT BLOCK EXIT OR EXIT ROUTES.
- A ALERT** → ALERT THE FIRE SERVICE. TELEPHONE "000". NOTIFY THE WARDEN OR CHIEF WARDEN AND PEOPLE AROUND AS SOON AS POSSIBLE. IF POSSIBLE RAISE AN ALARM TO NOTIFY OTHERS.
- C CONTAIN** → CONTAIN THE DANGER (FIRE) WHERE POSSIBLE TO DO SO, WHERE SAFE TO DO SO AND IF TRAINED TO DO SO. FOR e.g.. CLOSE DOORS AND WINDOWS, SELECT AND USE CORRECT EXTINGUISHER OR IF AVAILABLE USE FIRE HOSE REEL etc.
- E EVACUATE** → FOLLOW (CHIEF) WARDEN'S INSTRUCTION, USE FIRE STAIRS WHERE AVAILABLE, TAKE NEAREST AND SAFEST EXIT, DO NOT USE LIFT, EVACUATE IMMEDIATELY, SAFELY AND DO NOT RUN. GO TO THE ASSEMBLY AREA.

EMERGENCY ASSEMBLY AREA



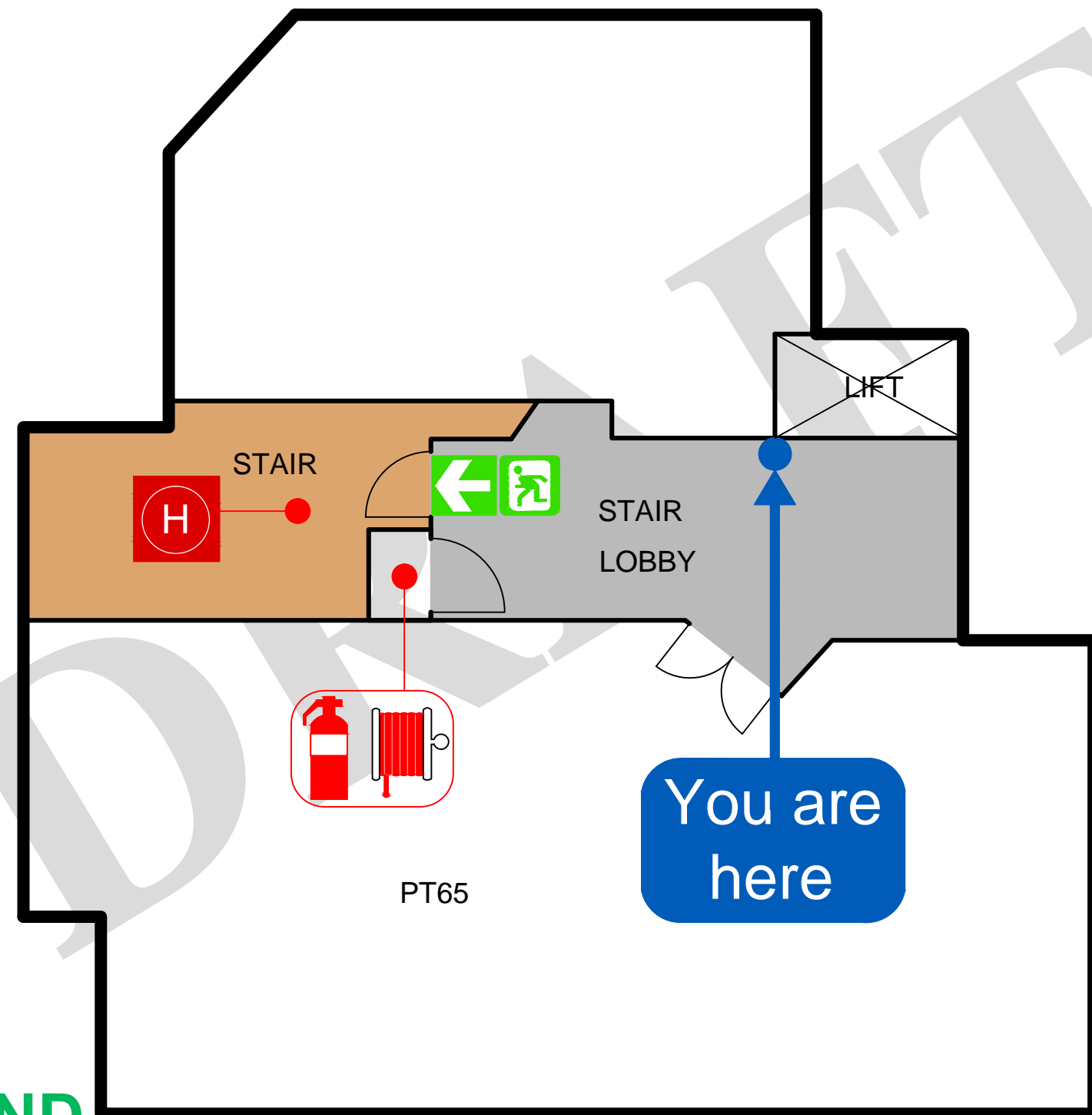
Prepared by: SPS Fire and Safety
 Contact : 1800 799 147
www.spsservices.com.au
 Date Prepared: 23-Nov-2015
 To be printed in A3 size
 Validity 5 years



EVACUATION DIAGRAM

NAME: SP61091

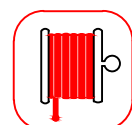
ADDRESS: 2-10 QUARRY MASTER DRIVE, PYRMONT NSW
 LEVEL 9 WEST



LEGEND



ABE Powder
Extinguisher



Fire Hose
Reel



Fire
Hydrant



Emergency
Exit



Assembly
Area

NOT TO SCALE